

Okay now don't be so excited because this document will help you only in bypassing the Password security of tracked changes, comments or forms i.e. you can remove the password protection & also restore it but you won't know the password entered by any user using the Protect document tool in the tools menu. Here's a visual aid: -

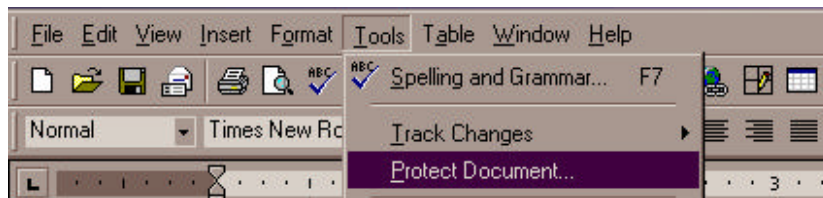


Fig. 1.1

Secondly, this document won't help you in hacking the password required while opening a Word document, isn't that sad.

Now users who are acquainted with the 'Protect document' option can go to page 3.

Let me give you a brief idea about 'Protect document'. MS Word gives you an option to protect your document from being edited. When we click on 'Protect document' we see a box like this: -

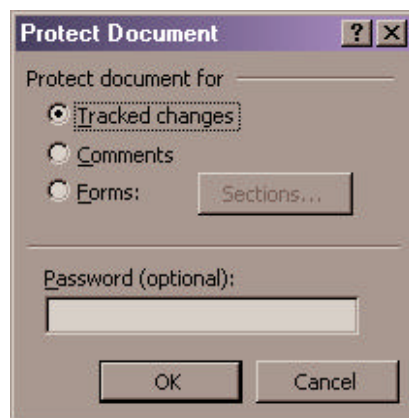


Fig. 1.2

There are three options Tracked changes, Comments & Forms. If you click on Tracked changes & click on OK, MS word lets another user change the document but highlights all the changes.

Go to [Tools -> Tracked changes-> Highlight changes](#). We see a box like this: -

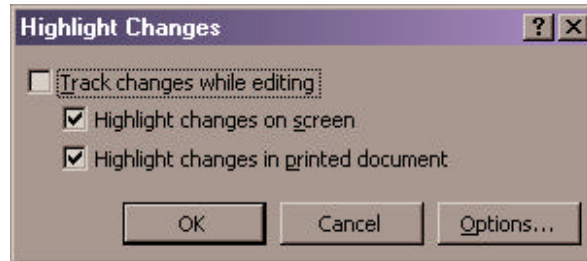


Fig. 1.3

Click on Options & study it carefully. You will clearly understand how different kinds of texts are displayed. I hope you have now understood about Tracked changes. If you still don't understand try it on any document & I am sure you will get it.

Now lets talk about protecting documents for comments. In MS word you can insert comments for any text or term. Go to [View -> Toolbars -> Reviewing](#) or else go to [Insert -> Comment](#). For details refer HELP. If we protect a document for Comments, MS Word allows another user to insert comments but does not let them change the contents of the document.

The last option is the Forms protection. Simply put if we use this one, MS Word protects all the contents except form fields & unprotected sections. If your document has more than one section use the Sections button. If you don't understand the term Forms go to [View -> Toolbars -> Forms](#). Here's what we get: -



Fig. 1.4

Try clicking on a few of them to understand them better.

Lastly we have the password input box. If we do not enter anything and click on OK you can unprotect the document by going to [Tools -> Unprotect document](#).

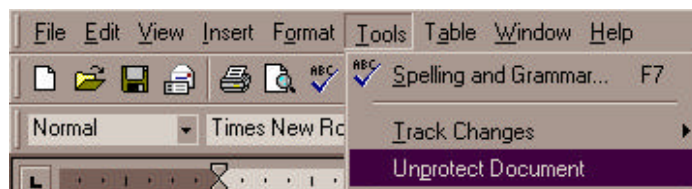


Fig. 1.5

If there is a password entered by the author of the document you can bypass it after going through the rest of this document.

I am assuming that you understand Document protection. Lets come to the actual hacking. We will follow a step-by-step approach: -

- (1) Open the protected document.
- (2) Go to **Tools -> Macro -> Microsoft script editor** or press **Alt + Shift + F11**.
- (3) What we have now is a Microsoft development environment script/ design editor window (Sounds big).
- (4) The texts displayed are in various colors i.e. if you have a color monitor. We even see faded text like this: - DOCUMENT. That text is our target. If you do not see the code window press **F7** or go to **View-> Code** (In Microsoft script editor).
- (5) Click on the first line in the code window & press **Ctrl + F** or go to **Edit-> Find & Replace**. We have a box like this: -

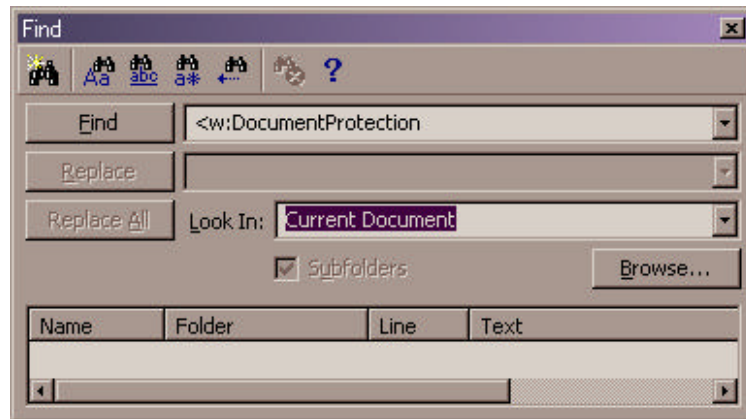


Fig. 1.6

- (6) Keep the Find box at such a position from where you can see both the code window & find box at least partly if not completely. Type '<w:DocumentProtection' (without the quotes) like in Fig 1.6 above. Click on Find. In the code window we will see selected text like this: -

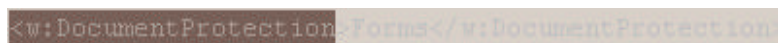


Fig. 1.7

- (7) It may rarely happen that you find a different match. But if this happens find '<w:' (without the quotes). You will see a few lines beginning with '<w:'. You will find the 'DocumentProtection' line there.

- (8) Now that you have found the required text lets move ahead. Like I said there are three ways to protect a document. If the document is protected for tracked changes the whole line will look like this: -

```
<w:DocumentProtection>TrackedChanges</w:DocumentProtection> --- Line1
```

Just below that the next line looks like this: -

```
<w:TrackRevisions/> --- Line 2
```

If the document is protected for comments the whole line will look like this: -

```
<w:DocumentProtection>Comments</w:DocumentProtection> --- Line 3
```

Followed by Line 2.

If the document is protected for Forms the whole line will look like this: -

```
<w:DocumentProtection>Forms</w:DocumentProtection> --- Line 4
```

- (9) Now select the whole line in the Code window. If the document is protected for Tracked changes select both lines 1 & 2 as mentioned above. If the document is protected for Comments select both lines 3 & 2 as mentioned above. Press **Ctrl + X** or simply delete the whole line.

- (10) Now go back to the Word document.

- (11) We have a box, which looks like this: -

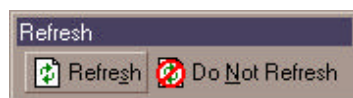


Fig. 1.8

- (12) Click on refresh. After a few moments the document will become unprotected & you can modify it. But that's not the end. You need be careful that the author does not come to know about this hacking thing. So make sure you don't save the document while closing it that is the way to restore the password. You can also re- enter the deleted line to restore the password security.

In short here's what has actually happened: -

- The author protects the document with a password.

- MS Word preserves the password.
- You use MS script editor to edit the scripting & bypass password security. But the password is not preserved by MS script editor it is actually preserved by MS Word so you cannot actually know it.

Well that's it, I would love to explain you more about Microsoft script editor but that will take another 50 pages. Even in the Microsoft script editor there are a few other methods but this method is the simplest & fastest. If you still have any doubts mail me at [thenetranger@rediffmail.com](mailto:thenetranger@rediffmail.com)

- By Sanjeev

P.S: The author of this document should not be held responsible for any damage caused to anybody due to the use of this document. Anybody using this document is using it at his/ her own risk.

By using this document you agree to abide by the above-mentioned rules.