

LINAGORA

Intervention du 25 mars 2004

10 h 45 – 11 h 30

M. Laurent PIERRE
Directeur de projet
laurent.pierre@linagora.com

Panorama des outils de supervision et d'administration

Webmin

gnokii

REAL
VnC

cacti

Nagios[®]

Oreon
Network and Service Manager

Plan de l'exposé

- **Gestion des alertes de Nagios**
- **Indicateurs de haut niveau**
- **Projet Oreon**
- **Cacti**
- **VNC**
- **Webmin**
- **COMET**

Envoi des alertes par SMS

gnokii

Mobiles spécifiques



Reroutage de mails



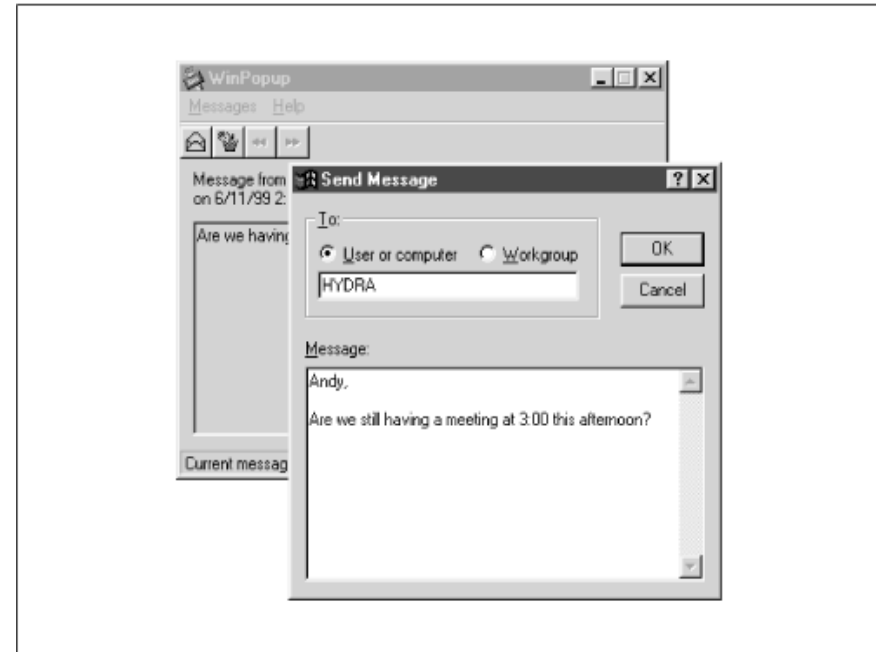
Contrat avec un opérateur

Envoi des alertes par WINPOPOP

Nagios

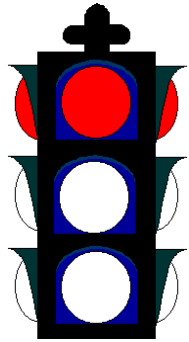


samba



Autres méthodes d'alerte

Boîtier de contrôle



Alerte sonore



Les utilisateurs



Problématique

- Criticité grandissante des applicatifs
- Impératifs de production
- Demandes de garantie de service

SLA du service d'exploitation
vis à vis
du reste de l'entreprise

Reporting de haut niveau pour la DSI

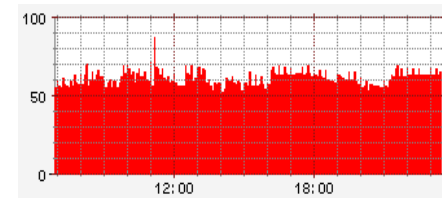
Génération d'indicateurs

Règles statistiques

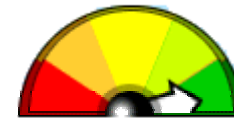
- composition binaire,
- somme pondérée.

Indicateurs atomiques :

- mesure du ping,
- espace disque,
- disponibilité de serveurs,
- ...



Indicateurs de haut niveau



Projet OREON

- **Projet commun LINAGORA / EPITECH**
- **Développement en cours**
- **Installation automatisée de Nagios et de développements spécifiques**
- **Module de découverte et de configuration du réseau**
- **Utilisation de SNMP**



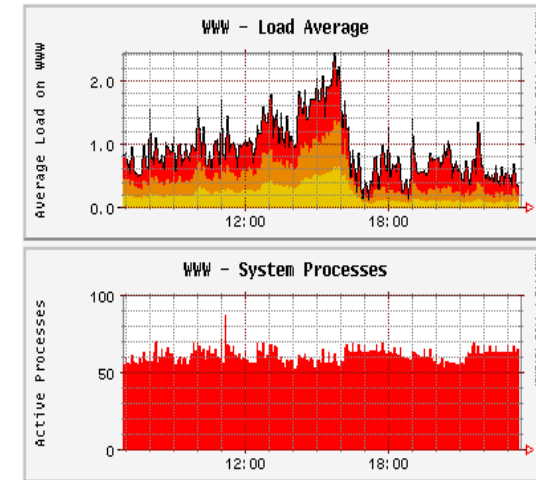
Nagios®

Descriptif général

Données



RRDtool



cacti

Traitement

Présentation

Spécificités

- **Module de remontée d'information commun avec Nagios**
- **Backend d'administration puissant :**
 - Arbres,
 - Modèles de graphes,
 - Modification de tout l'aspect d'un graphe,
 - Définition de requêtes types,
 - Modèles de requêtes.

Graph Setup
Graph Management
GPRINT Presets
Graph Trees
Colors
Templates
Graph Templates
Host Templates
Data Templates
Data Gathering
Data Sources
Polling Hosts
Available RRA's
Data Input Methods
Data Queries
CDEF's
Configuration
Utilities
Cacti Settings
Utilities
User Management
Logout User

console **graphs**
Logged in as admin

- Graph Setup
- Graph Management
- GPRINT Presets
- Graph Trees
- Colors
- Templates
- Graph Templates
- Host Templates
- Data Templates
- Data Gathering
- Data Sources
- Polling Hosts
- Available RRA's
- Data Input Methods
- Data Queries
- CDEF's
- Configuration
- Utilities
- Cacti Settings
- Utilities
- User Management
- Logout User

Graph Template Items [edit: Unix - Available Disk Space] Add

Graph Item	Data Source	Graph Item Type	CF Type	Item Color		
Item # 1	(hdd_used): Used	AREA	AVERAGE	F51D30	▼ ▲	✖
Item # 2	(hdd_used): Current:	GPRINT	LAST		▼ ▲	✖
Item # 3	(hdd_used): Average:	GPRINT	AVERAGE		▼ ▲	✖
Item # 4	(hdd_used): Maximum: <HR>	GPRINT	MAX		▼ ▲	✖
Item # 5	(hdd_free): Available	STACK	AVERAGE	002A97	▼ ▲	✖
Item # 6	(hdd_free): Current:	GPRINT	LAST		▼ ▲	✖
Item # 7	(hdd_free): Average:	GPRINT	AVERAGE		▼ ▲	✖
Item # 8	(hdd_free): Maximum: <HR>	GPRINT	MAX		▼ ▲	✖
Item # 9	(No Task): Total	LINE2	AVERAGE	000000	▼ ▲	✖
Item # 10	(No Task): Current:	GPRINT	LAST		▼ ▲	✖
Item # 11	(No Task): Average:	GPRINT	AVERAGE		▼ ▲	✖
Item # 12	(No Task): Maximum: <HR>	GPRINT	MAX		▼ ▲	✖

Graph Item Inputs Add

Name	
Available Disk Space Data Source	✖
Used Disk Space Data Source	✖

Template [edit: Unix - Available Disk Space]


Name
The name given to this graph template.

Graph Template

Title
 Use Per-Graph Value (Ignore this Value)

Image Format
 Use Per-Graph Value (Ignore this Value)


Height
 Use Per-Graph Value (Ignore this Value)



Définition d'un modèle de graphique

console graphs Logged in as admin

- Graph Setup
- Graph Management
- GPRINT Presets
- Graph Trees
- Colors
- Templates
- Graph Templates
- Host Templates
- Data Templates
- Data Gathering
- Data Sources
- Polling Hosts
- Available RRA's
- Data Input Methods
- Data Queries
- CDEF's
- Configuration
- Utilities
- Cacti Settings
- Utilities
- User Management
- Logout User



Data Templates [edit: Interface - Traffic]

Name <small>The name given to this data template.</small>	<input type="text" value="Interface - Traffic"/>
---	--

Data Source

Name	<input type="text" value="Interface - Traffic"/>
<input checked="" type="checkbox"/> Use Per-Graph Value (Ignore this Value)	
Data Input Source	<input type="text" value="Get SNMP Data (Indexed)"/>
<input type="checkbox"/> Use Per-Graph Value (Ignore this Value)	
Associated RRA's	<div style="border: 1px solid #ccc; padding: 2px;">Daily (5 Minute Average) Monthly (2 Hour Average) Weekly (30 Minute Average) Yearly (1 Day Average)</div>
Step	<input type="text" value="300"/>
<input type="checkbox"/> Use Per-Graph Value (Ignore this Value)	
Data Source Active	<input checked="" type="checkbox"/> Data Source Active
<input type="checkbox"/> Use Per-Graph Value (Ignore this Value)	

1: traffic_in ✕2: traffic_out ✕

Data Source Item [traffic_in] New

Internal Data Source Name	<input type="text" value="traffic_in"/>
<input type="checkbox"/> Use Per-Graph Value (Ignore this Value)	
Minimum Value	<input type="text" value="0"/>
<input type="checkbox"/> Use Per-Graph Value (Ignore this Value)	
Maximum Value	<input type="text" value="100000000"/>
<input checked="" type="checkbox"/> Use Per-Graph Value (Ignore this Value)	
Data Source Type	<input type="text" value="COUNTER"/>
<input type="checkbox"/> Use Per-Graph Value (Ignore this Value)	

Définition d'un modèle de données

console
graphs
Logged in as admin

- Graph Setup
- Graph Management
- GPRINT Presets
- Graph Trees
- Colors
- Templates
- Graph Templates
- Host Templates
- Data Templates
- Data Gathering
- Data Sources
- Polling Hosts
- Available RRA's
- Data Input Methods
- Data Queries
- CDEF's
- Configuration
- Utilities
- Cacti Settings
- Utilities
- User Management
- Logout User

Polling Hosts [edit: Radish]

Description
Give this host a meaningful description.

Host Template
Choose what type of host, host template this is. The host template will govern what kinds of data should be gathered from this type of host.

Hostname
Fill in the fully qualified hostname for this device.

Management IP
Choose the IP address that will be used to gather data from this host. The hostname will be used a fallback in case this fails.

SNMP Community
Fill in the SNMP read community for this device.

SNMP Username
Fill in the SNMP username for this device (v3).

SNMP Password
Fill in the SNMP password for this device (v3).

SNMP Version
Choose the SNMP version for this host.

Associated SNMP Query
If you choose to add this SNMP query to this host, information will be queried from this host upon addition.

Create Associated Graphs + Data Sources

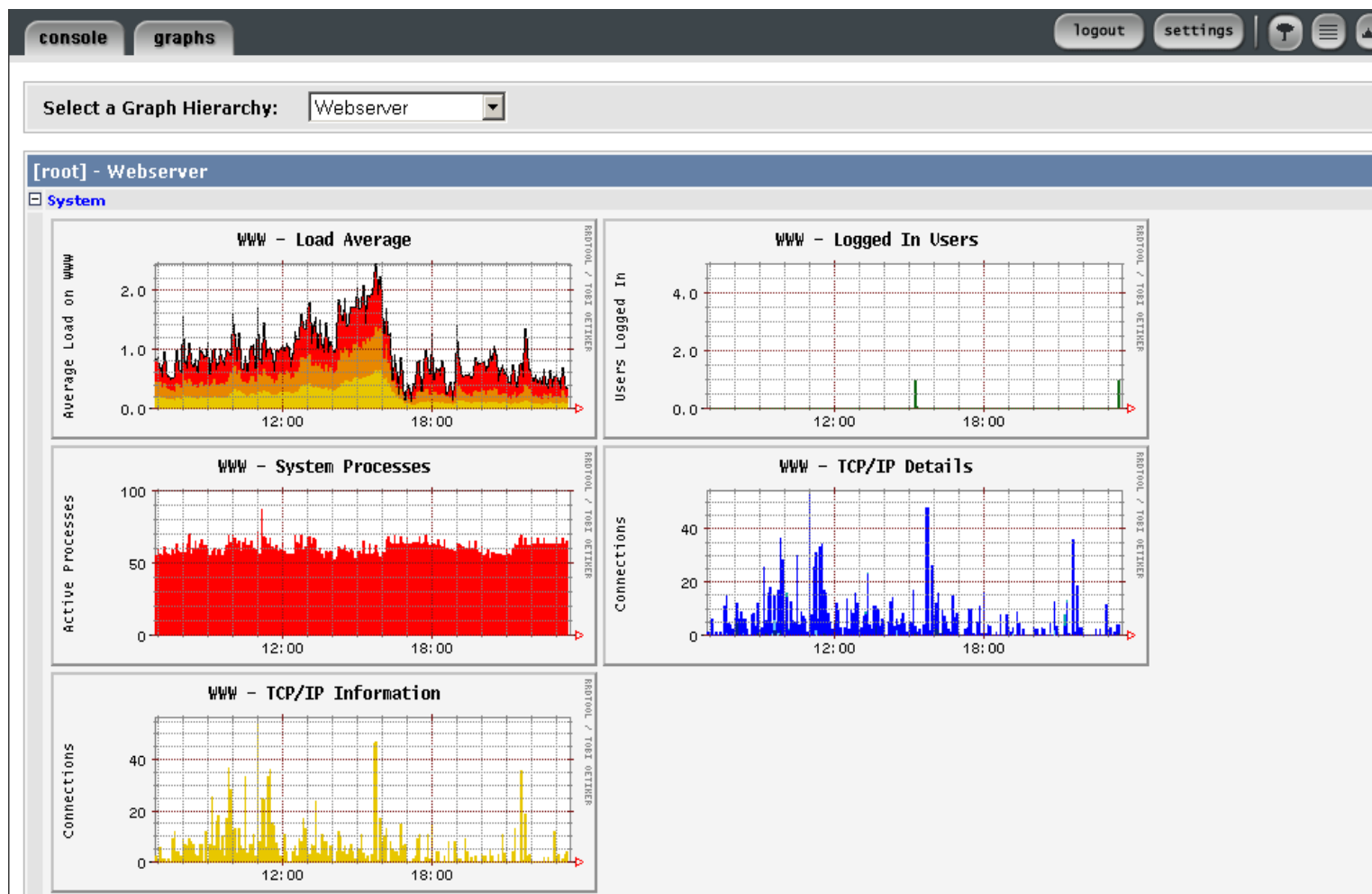
Graph Template Name	<input type="checkbox"/>
Create: ucd/net - CPU Usage	<input type="checkbox"/>
Create: ucd/net - Load Average	<input type="checkbox"/>
Create: ucd/net - Memory Usage	<input type="checkbox"/>

SNMP Query [SNMP - Interface Statistics]

Index	Description	Alias	Type	Speed	Hardware Address	IP Address	<input type="checkbox"/>
1	lo		softwareLoopback(24)	10000000		127.0.0.1	<input type="checkbox"/>



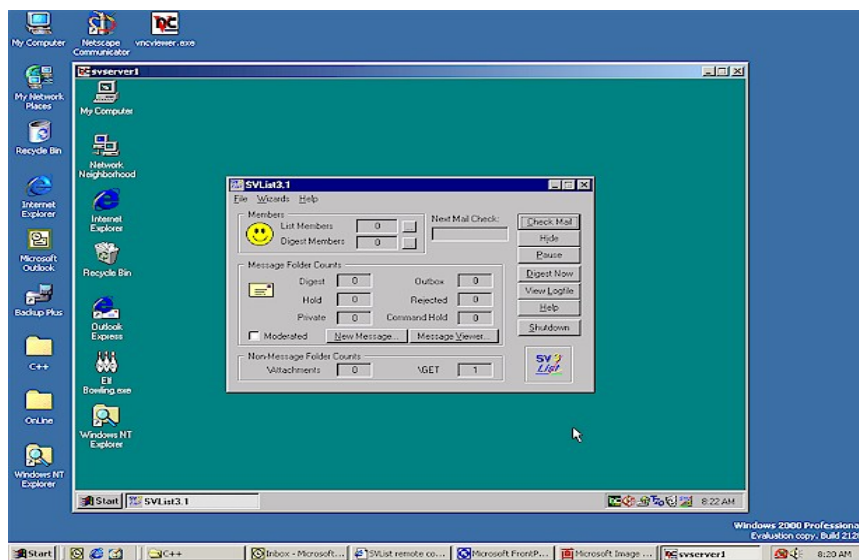
Définition d'un élément surveillé



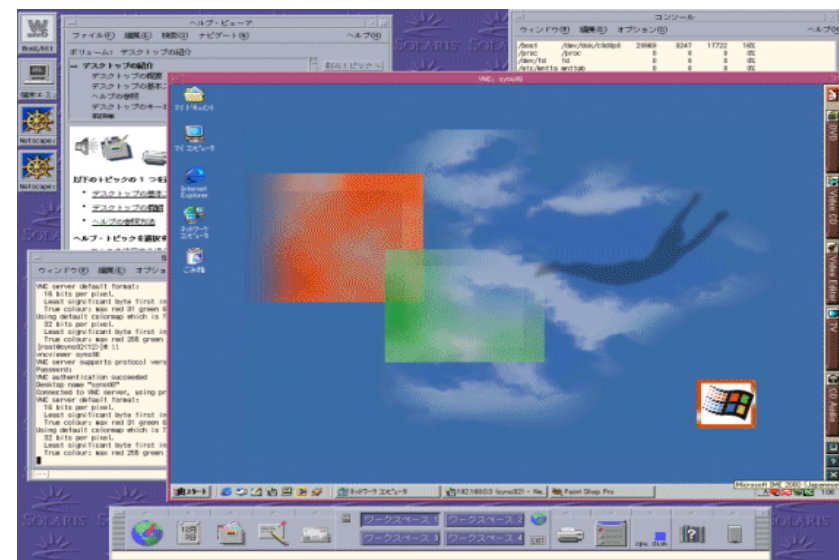
Graphiques finaux

Fonctionnalités principales

- Protocole de déport d'affichage par le réseau
- Prise en main et résolution d'incidents à distance
- Permet l'utilisation des outils d'administration graphiques
- Fonctionne sur tout type de plates-formes
- Intégré nativement dans le bureau de KDE3



« Windows dans Windows »



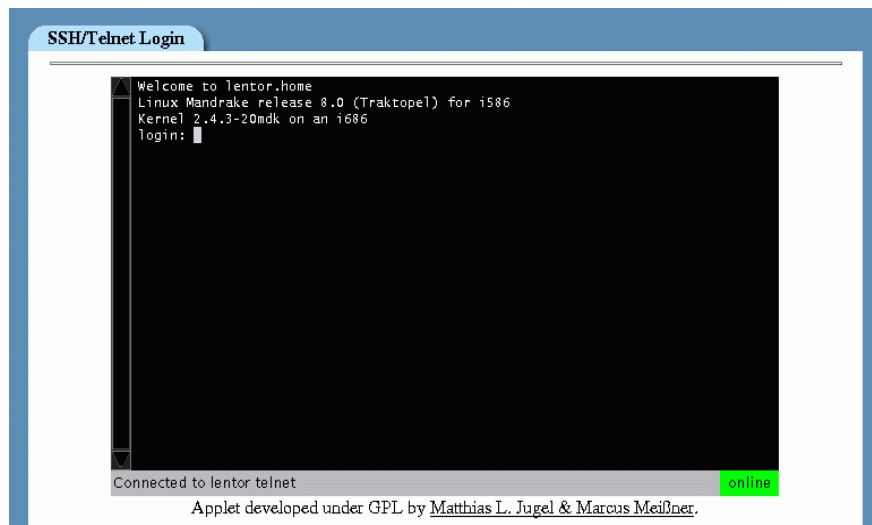
« Windows dans CDE »

Vue d'ensemble

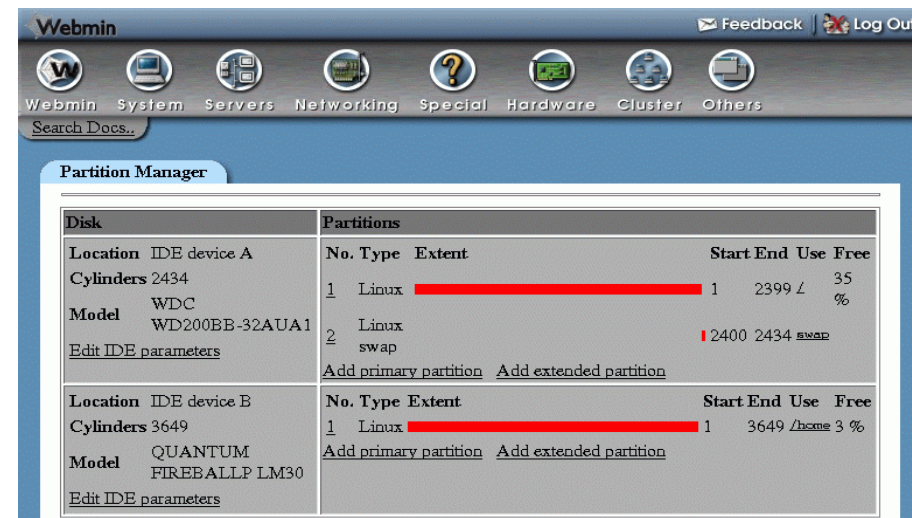
- Interface d'administration par le web
- Plate-forme généraliste acceptant des modules spécifiques
- Permet une gestion centralisée du parc



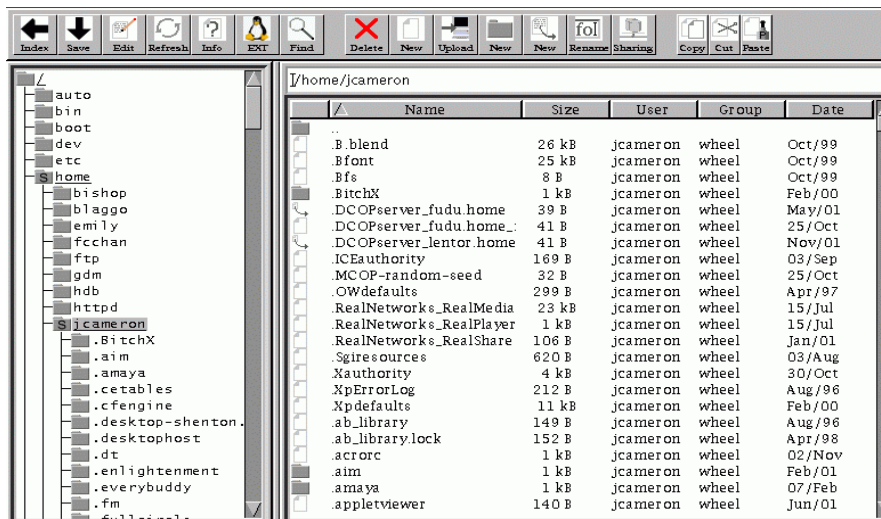
Vue générale



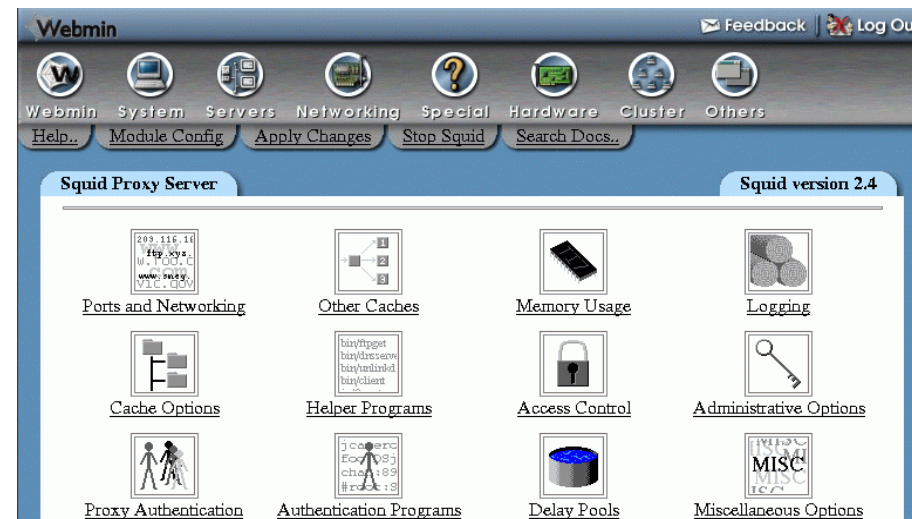
Module telnet/ssh



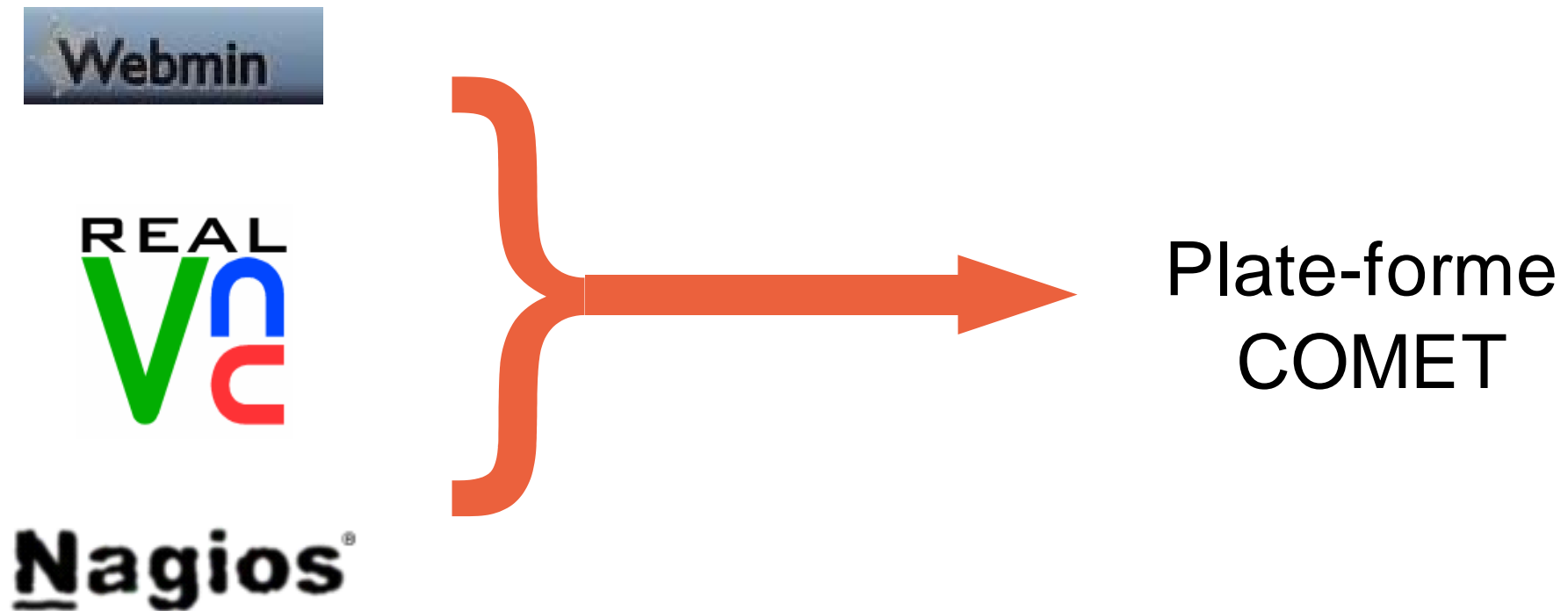
Contrôle des partitions



Gestionnaire de fichiers



Configuration de Squid



URLs utiles

- <http://www.gnokii.org/>
- <http://www.nagios.org>
- <http://www.raxnet.net/products/cacti/>
- <http://www.webmin.com>
- <http://www.oreon.org>
- <http://www.realvnc.com/>

LINAGORA

Merci de votre attention

LINAGORA

30, rue Saint Augustin

3ème étage

75002 PARIS

Tél : 01 58 18 68 28

<http://www.linagora.com/>