

Postfix-Cyrus-Web-cyradm-HOWTO

Luc de Louw

luc at delouw.ch

Revision History

- | | | |
|---|------------|-----------------|
| Revision 1.2.0 | 2002-10-16 | Revised by: ldl |
| The first release of the 1.2 version. | | |
| Revision 1.1.7 | 2002-10-15 | Revised by: ldl |
| Added Michael Muenz' hints for SMTP AUTH, corrected ca-cert related mistake, improved SGML code (more metadata), updated the software mentioned in the document. | | |
| Revision 1.1.6 | 2002-06-14 | Revised by: ldl |
| Added sasl_mech_list: PLAIN to imapd.conf, added web-cyradm Mailinglist, added more to web-cyradm | | |
| Revision 1.1.5 | 2002-06-11 | Revised by: ldl |
| Added new SQL query to initialize web-cyradm to have full data integrity in the MySQL Database, mysql-mydestination.cf reported to be operational as expected. | | |
| Revision 1.1.4 | 2002-05-15 | Revised by: ldl |
| Added description what is needed in /etc/services Another fix for pam_mysql compile, updated software versions. | | |
| Revision 1.1.3 | 2002-05-08 | Revised by: ldl |
| Added more description for web-cyradm, fix for wrong path of the saslauthdb-socket, Fix for wrong place of com_err.h, protection of the TLS/SSL private key. | | |
| Revision 1.1.2 | 2002-04-29 | Revised by: ldl |
| Added description for Redhat users how to install the init scripts. | | |
| Revision 1.1.1 | 2002-04-29 | Revised by: ldl |
| Fixed bug in configuring cyrus-IMAP (disabled unused kerberos authentication) | | |
| Revision 1.1.0 | 2002-04-28 | Revised by: ldl |
| Initial support for building cyrus from source, dropped binary installation for Cyrus, because configuration has changed with Release 2.1.x | | |
| Revision 1.0.2 | 2002-04-25 | Revised by: ldl |
| Added basic description for sieve and correct sender handling, minor fixes to db related stuff, Added mysql-lookup for »mydestination« , fixed bug for building postfix with mysql support. | | |
| Revision 1.0.1 | 2002-04-07 | Revised by: ldl |
| Added an important fix for compiling pam_mysql | | |
| Revision 1.0.0 | 2002-04-07 | Revised by: ldl |
| Initial Release | | |

This document guides you through the installation of the Postfix mail transportation agent (MTA), the Cyrus IMAP server. The goal is a fully functional high-performance mailsystem with user-administration with Web-cyradm, a webinterface. Data like virtualusers, aliases etc. are stored in a mysql database.

Table of Contents

<u>1. Introduction</u>	1
<u>1.1. Contributors and Contacts</u>	1
<u>1.2. Why I wrote this document</u>	1
<u>1.3. Copyright Information</u>	1
<u>1.4. Disclaimer</u>	2
<u>1.5. New Versions</u>	2
<u>1.6. Credits</u>	2
<u>1.7. Feedback</u>	2
<u>1.8. Translations</u>	3
<u>2. Technologies</u>	4
<u>2.1. The Postfix MTA</u>	4
<u>2.2. Cyrus IMAP</u>	4
<u>2.3. MySQL Database</u>	5
<u>2.4. pam_mysql</u>	5
<u>2.5. Web–cyradm Webinterface</u>	5
<u>3. Getting and installing the software</u>	8
<u>3.1. Getting and installing MySQL</u>	8
<u>3.1.1. Download</u>	8
<u>3.1.2. Building and installing</u>	8
<u>3.2. Getting and installing Berkeley DB</u>	9
<u>3.2.1. Download Berkely DB</u>	9
<u>3.2.2. Building and installing Berkeley DB</u>	9
<u>3.3. Getting and installing Cyrus SASL and IMAP</u>	9
<u>3.3.1. Download Cyrus SASL and Cyrus IMAP</u>	9
<u>3.3.2. Building and installing Cyrus SASL</u>	9
<u>3.3.3. Building Cyrus–IMAP</u>	10
<u>3.3.4. Automatic startup script</u>	10
<u>3.4. Getting and installing Postfix</u>	11
<u>3.4.1. Download</u>	11
<u>3.4.2. Creating a User–ID (UID) and Group–ID (GID) for postfix</u>	11
<u>3.4.3. Building and installing</u>	12
<u>3.5. Getting and installing pam_mysql</u>	12
<u>3.5.1. Download</u>	12
<u>3.5.2. Installing</u>	12
<u>3.6. Getting and installing Web–cyradm</u>	13
<u>3.6.1. Download</u>	13
<u>3.6.2. Installing</u>	13
<u>4. Configuring MySQL</u>	14
<u>4.1. Securing MySQL</u>	14
<u>4.2. Create the databases and tables</u>	14
<u>5. Configuring PAM</u>	16

Table of Contents

<u>6. Configuring Postfix</u>	17
<u>6.1. master.cf</u>	17
<u>6.2. main.cf</u>	17
<u>7. Configuring Cyrus IMAP</u>	20
<u>7.1. Creating the config files</u>	20
<u>7.1.1. /etc/services</u>	20
<u>7.1.2. /etc/imapd.conf</u>	20
<u>7.1.3. Creating the TLS/SSL Certificate</u>	20
<u>7.1.4. /etc/cyrus.conf</u>	21
<u>7.2. Creating the directories</u>	22
<u>7.2.1. /var/imap</u>	22
<u>7.2.2. /var/spool/imap</u>	22
<u>7.2.3. /usr/sieve</u>	22
<u>7.2.4. The rest of the directories</u>	22
<u>7.3. Changing the attributes</u>	22
<u>8. Configuring Web-cyradm</u>	23
<u>8.1. Cyrus setup</u>	23
<u>8.2. Database setup</u>	23
<u>8.3. Default Quota</u>	24
<u>8.4. Crypted passwords</u>	24
<u>8.5. Usernames</u>	24
<u>9. Testing the setup</u>	25
<u>9.1. (Re-)Starting the daemons</u>	25
<u>9.2. Testing Web-cyradm</u>	25
<u>9.3. Testing postfix</u>	26
<u>9.4. Testing the IMAP and POP functionality</u>	26
<u>10. Further Information</u>	29
<u>10.1. News groups</u>	29
<u>10.2. Mailing Lists</u>	29
<u>10.2.1. <postfix-users at postfix.org></u>	29
<u>10.2.2. <info-cyrus at lists.andrew.cmu.edu></u>	29
<u>10.2.3. <web-cyradm at test.delouw.ch></u>	29
<u>10.3. HOWTO</u>	30
<u>10.4. Local Resources</u>	30
<u>10.5. Web Sites</u>	30
<u>1. FAQ</u>	31
<u>11. Questions and Answers</u>	31

1. Introduction

The cyrus part is only valid for Cyrus-IMAP 2.1.x and Cyrus-SASL 2.1.x. If you plan to use Cyrus-IMAP 2.0.x then please consult the deprecated version 1.0.x of this HOWTO.

I recommend strongly to update to the Cyrus Version 2.1.x. If you do so, you will have chances to get valuable support by the community

1.1. Contributors and Contacts

First I would thank all those people who send questions and suggestions that made a further development of this document possible. It shows me, sharing knowledge is the right way. I would encourage you to send me more suggestion, just write me an email <luc_at_delouw.ch>

1.2. Why I wrote this document

There are different approaches howto set up different mailsystems. Most documents available are related to Sendmail, procmail, WU-IMAPd and friends. These fine-running software is unfortunately very un-flexible concerning user administration.

For longer time I was testing alternative MTA's like qmail, postfix and exim, IMAP/POP-servers like Cyrus, vpopmail, Courier IMAP and others.

At the end of the day, from my point of view the couple Postfix/Cyrus seems to be the most flexible and performant solution.

All these combinations of software had one in common: there was only little documentation available concerning how this software is working together with each other. For installing the software, lot of effort must be spent to get all information needed to get all software running.

1.3. Copyright Information

This document is copyrighted (c) 2002 Luc de Louw and is distributed under the terms of the Linux Documentation Project (LDP) license, stated below.

Unless otherwise stated, Linux HOWTO documents are copyrighted by their respective authors. Linux HOWTO documents may be reproduced and distributed in whole or in part, in any medium physical or electronic, as long as this copyright notice is retained on all copies. Commercial redistribution is allowed and encouraged; however, the author would like to be notified of any such distributions.

All translations, derivative works, or aggregate works incorporating any Linux HOWTO documents must be covered under this copyright notice. That is, you may not produce a derivative work from a HOWTO and impose additional restrictions on its distribution. Exceptions to these rules may be granted under certain conditions; please contact the Linux HOWTO coordinator at the address given below.

In short, we wish to promote dissemination of this information through as many channels as possible. However, we do wish to retain copyright on the HOWTO documents, and would like to be notified of any plans to redistribute the HOWTOs.

If you have any questions, please contact <linux-howto@metalab.unc.edu>

1.4. Disclaimer

No liability for the contents of this documents can be accepted. Use the concepts, examples and other content at your own risk. As this is a new edition of this document, there may be errors and inaccuracies, that may of course be damaging to your system. Proceed with caution, and although this is highly unlikely, the author(s) do not take any responsibility for that.

All copyrights are held by their by their respective owners, unless specifically noted otherwise. Use of a term in this document should not be regarded as affecting the validity of any trademark or service mark.

Naming of particular products or brands should not be seen as endorsements.

You are strongly recommended to take a backup of your system before major installation and backups at regular intervals.

1.5. New Versions

This is the initial release.

New version of this document are announced on freshmeat

The latest version of this document you can get from <http://www.delouw.ch/linux>

- [HTML](#).
 - [Postscript \(ISO A4 format\)](#).
 - [Acrobat PDF](#).
 - [SGML Source](#).
 - [HTML gzipped tarball](#).
-

1.6. Credits

- Michael Muenz <m.muenz@maxonline.de> for his help with SMTP Authentication
 - The nice people at <discuss@linuxdoc.org> for supporting me in writing the HOWTOs
-

1.7. Feedback

Feedback is most certainly welcome for this document. Without your submissions and input, this document wouldn't exist. Please send your additions, comments and criticisms to the following email address : <luc@delouw.ch>.

Please understand, that I don't want to add Cyrus–IMAP 2.0.x related stuff in this Document anymore

1.8. Translations

At the moment no translations are available. A german translation is planned and would be written by myself as soon as I get the time.

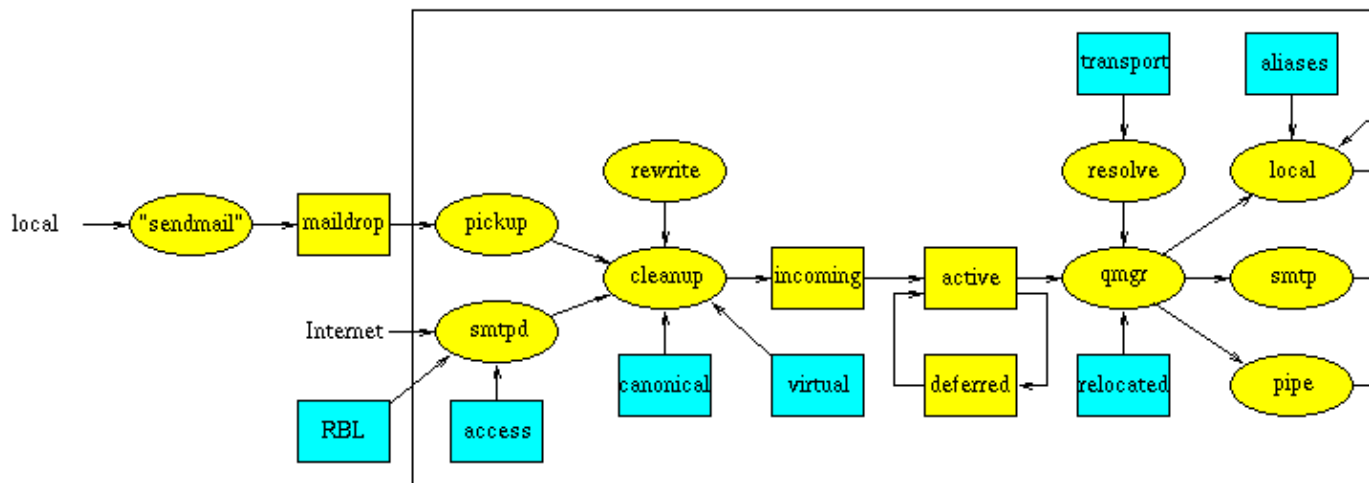
Translations to other languages are always welcome. If you translated this document, please translate the SGML source. Please let me know if you begin to translate, so I can set a link here.

2. Technologies

2.1. The Postfix MTA

Quoting www.postfix.org »Postfix attempts to be fast, easy to administer, and secure, while at the same time being sendmail compatible enough to not upset existing users. Thus, the outside has a sendmail-ish flavor, but the inside is completely different.«

Figure 1. Postfix – the big picture



Doesn't it look impressive? – It looks much more complicated as it is. Postfix is indeed nice to configure and handle

Unlike sendmail, postfix is not one monolithic program, it is a compilation of small programs, each of it has a specialized function. At this place I don't want to go into details with program does what. If you are interested how Postfix is working, please see the documentation at <http://www.postfix.org/docs.html>

In this document you will find the information what to put in the config files

2.2. Cyrus IMAP

The Cyrus IMAP is developed and maintained by Carnegie Mellon University.

Unlike the WU-IMAPd Cyrus is using its own method to store the users mail. The data is stored in a database, this makes Cyrus so performant. Especially with lots of users and/or lot of big emails, there is nothing such fast as the Cyrus IMAP-server.

Another very important feature is, you don't need a local Un*x user for each account. All users are authenticated by the IMAP-Server. This makes it a great solution for really huge base of users.

User administration is done by special IMAP-commands. This allows you to either use the commandline interface, or use one of the available Webinterfaces. This Method is much more secure than a Webinterface to

/etc/passwd !

Starting from Cyrus 2.1, the SASL-lib version 2 is used for authentication. So for the setup described in this HOWTO there is a tree-layer authentication implemented. Cyrus authenticates with saslauthd which forwards the request to pam_mysql which finally looks up the MySQL-table.

Since CMU changed the license policy for Cyrus, this software is going to be used by much more users

2.3. MySQL Database

MySQL is a very fast, powerful and very nice to handle Database.

Since Cyrus can authenticate its users with pam, you can use pam_mysql as a connector to the Userdatabase stored in MySQL. This allows you to create a nice Webinterface for your users for changing passwords, define and delete aliases and more.

2.4. pam_mysql

pam means "Pluggable authentication module" and was originally proposed by some people at Sun. In meantime a lot of modules have been developed. One of them is an interface to MySQL

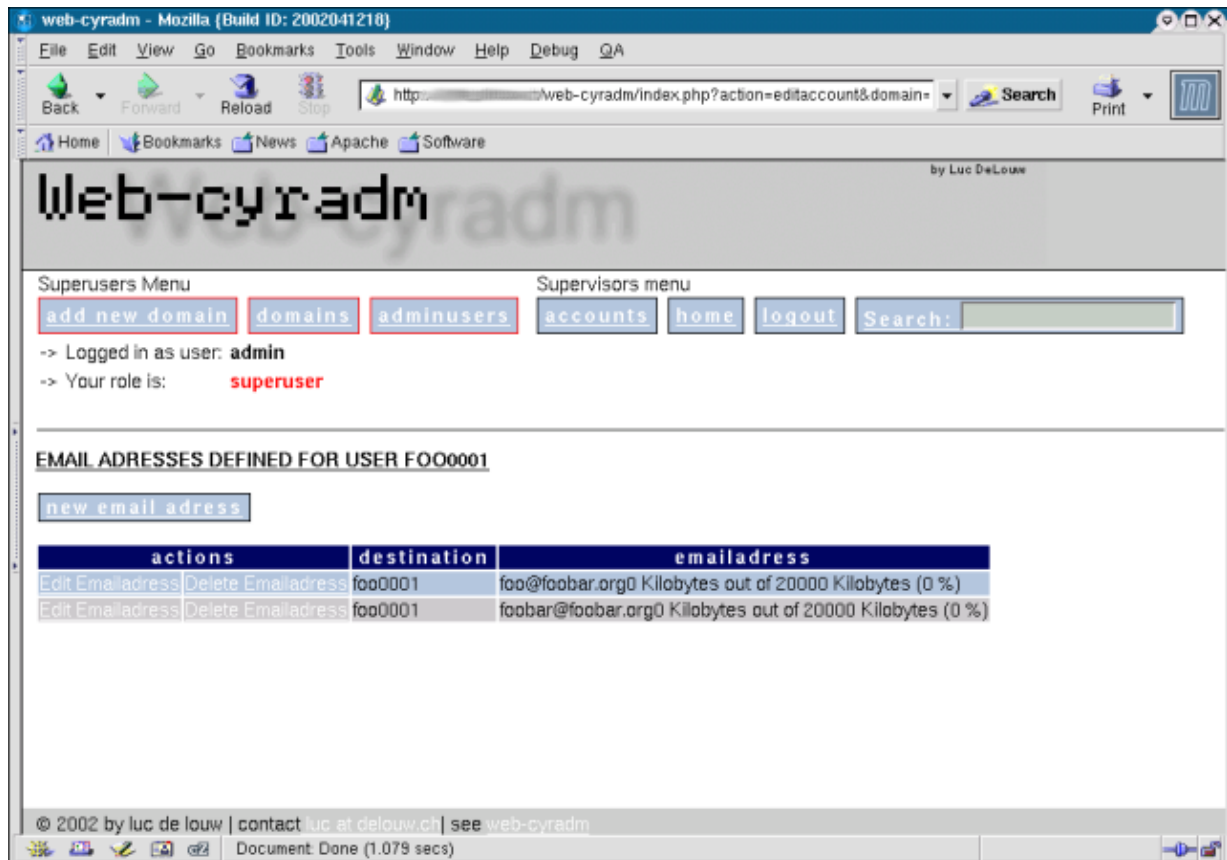
With pam_mysql you to store the users password in a mysql database. Further, Postfix is able to lookup aliases from a MySQL-table. At the end of the day, you have a base for all administrative tasks to be done by the Sysadmin.

Further you will be able to delegate some tasks to Powerusers, e.g. creating Accounts for a particular Domain. Changing passwords and creating new aliases can be delegated to the user. At the end of the day you as a Sysadmin have the time to do some more productive tasks, or write a HOWTO for the Linux Documentation Project :-)

2.5. Web-cyradm Webinterface

Figure 2. Web-cyradm Domain administration

Postfix-Cyrus-Web-cyradm-HOWTO



Web-cyradm is the Webinterface that allows you to perform the administrative tasks to your mailsystem This Screenshot shows the domain-administration part of Web-cyradm.

Web-cyradm is written in PHP, which is often installed on webservers. Time to set up Web-cyradm takes just a few minutes.

Features:

- Administration of multiple virtual domains
- Setting of quotas
- Automatically create username, either with a defined prefix, or the domainname as postfix
- Delegate tasks like creating new users to »Domain Masters«
- Map user-accounts to emailaddresses
- Support for MySQL and PostgreSQL
- i18n (internationalization) support
- Chinese translation (Simplified Chinese zh_CN)
- Danish translation (da)
- German translation (de)
- Hungarian translation (hu)
- French translation (fr)
- Italian translation (it)
- Portuguese translation (pt)
- Russian translation (ru koi8r)

Web-cyradm has support for different roles of its users. If you plan to use it as a frontend for your

Postfix-Cyrus-Web-cyradm-HOWTO

powerusers, please notice, that security may be a problem, the role based stuff needs a security review.

3. Getting and installing the software

Most of the software is included in your Linux distribution. SuSE is shipping Cyrus as far as I know since 7.1. Since SuSE 8.1, cyrus-imap 2.1 and sasl2 is included, but not yet tested for this setup.

Redhat ships no cyrus-IMAP, but sasl1 is included (useless for this setup)

3.1. Getting and installing MySQL

3.1.1. Download

Origin-Site: <http://www.mysql.com/downloads/>

3.1.2. Building and installing

```
cd /usr/local
tar -xvzf mysql-3.23.53.tar.gz
cd mysql-3.23.53

./configure \
--prefix=/usr/local/mysql \
--enable- assembler \
--with-innodb

make
make install

/usr/local/mysql/bin/mysql_install_db
echo /usr/local/mysql/lib/mysql >> /etc/ld.so.conf
ldconfig

ln -s /usr/local/mysql/include/mysql /usr/include/mysql
ln -s /usr/local/mysql/lib/mysql /usr/lib/mysql
```

For security-improvement add a mysql-user on your system i.e. "mysql", then

```
chown -R mysql /usr/local/mysql/var
```

and change the line user=root to user=mysql in the file /usr/local/mysql/bin/safe_mysqld

you may wish to start mysql automatically at boottime, copy

/usr/local/mysql/share/mysql/mysql.server to /etc/init.d/ for SuSE, for Redhat it is /etc/rc.d/init.d instead of /etc/init.d/. Further you need to add Symlinks to /etc/init.d/rc3.d for SuSE and /etc/rc.d/rc3.d

The following example is for SuSE Linux and should be easily changed for Redhat and other Linux distributions and commercial Unixes.

```
cp /usr/local/mysql/share/mysql/mysql.server /etc/init.d/
ln -s /etc/init.d/mysql.server /etc/init.d/rc3.d/S20mysql
ln -s /etc/init.d/mysql.server /etc/init.d/rc3.d/k08mysql
```

3.2. Getting and installing Berkeley DB

The Berkeley DB is a requirement for building Cyrus-SASL and Cyrus-IMAP. Some Systems comes with recent versions but without the header files installed. Please see your distributors CD/DVD to check if you can install the header files from a package.

The version that comes with GNU/Debian Linux is out of Date, you will need to compile most recent version instead. If you already installed Berkely DB on your Debian Box, please fist uninstall the software to prevent conflicts.

It is also very important, that Cyrus-SASL and Cyrus-IMAP is compiled with the same version of Berkely DB of else you can run into problems

3.2.1. Download Berkely DB

Origin-Site: <http://www.sleepycat.com/update/snapshot/db-4.0.14.tar.gz>

3.2.2. Building and installing Berkeley DB

```
cd dist
./configure --prefix=/usr/local/bdb
make
make install
echo /usr/local/bdb/lib >> /etc/ld.so.conf
ldconfig
```

3.3. Getting and installing Cyrus SASL and IMAP

Building Cyrus SASL and IMAP from source is not a easy task. There are some prerequisites to be fulfilled, and lots of difficult authentication related stuff to be considered.

3.3.1. Download Cyrus SASL and Cyrus IMAP

Origin-Site: <ftp://ftp.andrew.cmu.edu/pub/cyrus-mail/cyrus-sasl-2.1.9.tar.gz>

Origin-Site: <ftp://ftp.andrew.cmu.edu/pub/cyrus-mail/cyrus-imapd-2.1.9.tar.gz>

3.3.2. Building and installing Cyrus SASL

```
tar -xvzf cyrus-sasl-2.1.9.tar.gz
cd cyrus-sasl-2.1.9

./configure \
--enable-anon \
--enable-plain \
--enable-login \
--disable-krb4 \
```

```

--with-saslauthd=/var/run/saslauthd \
--with-pam \
--with-dblib=berkeley \
--with-bdb-libdir=/usr/local/bdb/lib \
--with-bdb-incdir=/usr/local/bdb/include \
--with-openssl-dir=/usr/local/ssl \
--with-plugindir=/usr/local/lib/sasl2

make
make install

mkdir -p /var/run/saslauthd

cd saslauthd
make testsaslauthd
cp testsaslauthd /usr/local/bin

ldconfig

```

The SASL library is installed in `/usr/local/lib/sasl2` but some programs are expecting SASL in `/usr/lib/sasl2`. So it is a good idea to create a symlink: **`ln -s /usr/local/lib/sasl2 /usr/lib/sasl2`**.

The `testsaslauthd` program allows you to test the `saslauthd`, description follows later.

3.3.3. Building Cyrus-IMAP

```

tar -xvzf cyrus-imapd-2.1.9.tar.gz
cd cyrus-imapd-2.1.9

export CPPFLAGS="-I/usr/include/et"

./configure \
--with-sasl=/usr/local/lib \
--with-perl \
--with-auth=unix \
--with-openssl=/usr/local/ssl \
--without-ucdsnmp

make depend
make
make install

```

3.3.4. Automatic startup script

If you wish to start the Cyrus IMAP daemon automatically after booting, you need a startup script. Place the following script in `/etc/init.d/` for Redhat it is `/etc/rc.d/init.d` instead of `/etc/init.d/`.

```

#!/bin/bash
#
# Cyrus startup script

case "$1" in
  start)
    # Starting SASL saslauthd daemon
    /usr/local/sbin/saslauthd -a pam&

    # Starting Cyrus IMAP Server
    /usr/cyrus/bin/master &

```

```
;;

stop)

# Stopping SASL saslauthd daemon
killall saslauthd

# Stopping Cyrus IMAP Server
killall /usr/cyrus/bin/master

;;

*)
echo "Usage: $0 {start|stop}"
exit 1
;;

esac
```

If I get the time, I'll provide a more sophisticated script, but this script works

Now create the Symlinks in the runlevel directory (SuSE):

```
ln -s /etc/init.d/cyrus /etc/init.d/rc3.d/S20
ln -s /etc/init.d/cyrus /etc/init.d/rc3.d/K10
```

For Redhat:

```
ln -s /etc/rc.d/init.d/cyrus /etc/rc.d/rc3.d/S20cyrus
ln -s /etc/rc.d/init.d/cyrus /etc/rc.d/rc3.d/K10cyrus
```

Attn the distributors: W H E N will all distributors use the same paths for the init script? thanks!

3.4. Getting and installing Postfix

3.4.1. Download

Origin-Site: <http://www.postfix.org/ftp-sites.html>

If you want to use SMTP authentication, you need to download the latest snapshot release, version 1.1.11 does NOT work with sasl2. Use 1.1.11-20020928 or newer.

3.4.2. Creating a User-ID (UID) and Group-ID (GID) for postfix

Before you can build and install postfix you have to be sure a »postfix« and a »postdrop« groups and users exists on the System. First check for the groups. You can check this by **grep postfix /etc/group** and **grep maildrop /etc/group**

If there are no such groups and users, you just create them. Search for a free numeric UID and GID. In the following example I will use UID and GID 33333 for Postfix and 33335 for the maildrop UID and GID. This ID's are corresponding to other documents.

```
groupadd -g 33333 postfix
groupadd -g 33335 postdrop

useradd -u 33333 -g 33333 -d /dev/null -s /bin/false postfix
```

3.4.3. Building and installing

The following screen shows what you have to do, if you installed MySQL from source as described above. If you installed MySQL from a binary package such as rpm or deb, then you have to change the include and library-flags to `-I/usr/include/mysql` and `-L/usr/lib/mysql`.

```
tar -xvzf postfix-1.1.11-20020928.tar.gz

cd postfix-1.1.11-20020928

make makefiles 'CCARGS=-DHAS_MYSQL \
-I/usr/local/mysql/include/mysql -DUSE_SASL_AUTH \
-I/usr/local/include/sasl' 'AUXLIBS=-L/usr/local/mysql/lib/mysql \
-lmysqlclient -lz -lm -L/usr/local/lib -lsasl2'
make
make install
```

During **make install** a few questions are asked. Just pressing **Enter** should match your needs. For Redhat users it could be useful to enter `/usr/local/share/man`

3.5. Getting and installing pam_mysql

3.5.1. Download

Origin-Site: <http://sourceforge.net/projects/pam-mysql/>

3.5.2. Installing

If you compiled MySQL by yourself, you need to create a symlink to the MySQL includes and libraries

Additionally there is a bug in the Makefile which you need to correct. Edit the file and replace as follow:

```
old:

export LD_D=gcc -shared -Xlinker -x -L/usr/lib/mysql

new:

export LD_D=gcc -shared -Xlinker -x -L/usr/lib/mysql -lz
```

After customizing that file go ahead with compiling `pam_mysql`

```
tar -xvzf pam_mysql-0.4.7.tar.gz

cd pam_mysql

make
```



```
cp pam_mysql.so /lib/security
ln -s /tmp/mysql.sock /var/lib/mysql/mysql.sock
```

3.6. Getting and installing Web-cyradm

3.6.1. Download

Origin-Site: <http://www.web-cyradm.org>

3.6.2. Installing

Web-cyradm is written in PHP. If you don't have a webserver with php installed, I like to refer to my [Apache-Compile-HOWTO](#). That document describes how to set up Apache with PHP and other modules

I M P O R T A N T : Since web-cyradm is under heavy development, it maybe does not work properly with PHP 4.2.1 or newer. Please edit your `/usr/local/lib/php.ini` and set `»register_globals=On«` to be sure it works. please report any bugs to web-cyradm at test.delouw.ch (after subscribing the list).

Since web-cyradm uses PEAR for its database abstraction, you will also need a recent copy of PEAR. This is included in recent PHP Versions. I strongly suggest to update PHP anyway to 4.2.3 because a lot of important bugs have been fixed.

An often error done is to forget to touch the logfile and change the owner to the UID that Apache use. This is usually `»nobody«` or `»wwwrun«`.

```
cd /usr/local/apache/htdocs
tar -xvzf web-cyradm-0.5.1.tar.gz
touch /var/log/web-cyradm.log
chown nobody /var/log/web-cyradm.log
```

After unpacking web-cyradm move it to a place in your webserver's DocumentRoot

This is all, now we need to configure the whole bunch of software

4. Configuring MySQL

4.1. Securing MySQL

Because you are using MySQL to authenticate users, you need to restrict network access to Port 3306.

I suggest to just bind mysql to the loopback-interface 127.0.0.1. This makes sure nobody can connect to your MySQL-Daemon via the network.

edit `/etc/init.d/mysql.server` and edit line 107 as following:

Original line:

```
$bindir/safe_mysqld --datadir=$datadir --pid-file=$pid_file&
```

Changed line:

```
$bindir/safe_mysqld --datadir=$datadir --pid-file=$pid_file \  
--bind-address=127.0.0.1&
```

(Re-)start your MySQL-Daemon by issuing `/etc/init.d/mysql.server start`

To ensure the configuration-change was successful issue: `netstat -an|grep LISTEN`. The Output should be looking similar to this:

```
bond:~ # netstat -an|grep LISTEN  
tcp        0      0 127.0.0.1:3306      0.0.0.0:*           LISTEN
```

4.2. Create the databases and tables

Now we need to create the database and tables for postfix and web-cyradm and add a user to the database

Web-cyradm comes with two SQL-files: `insertuser.sql` and `create.sql` The first inserts the Database user to the database »mysql«, the second creates the database »mail« and the needed tables.

The password for the user "mail" in this example is "secret" please insert whatever user and password you like

First you must add the user by executing `/usr/local/mysql/bin/mysql < insertuser.sql` After the new DB-user is successfully added, you need to reload mysql with `mysqladmin reload`

To create the needed tables in the database:

```
/usr/local/mysql/bin/mysql mail -u mail -p < \  
/usr/local/apache/htdocs/web-cyradm/scripts/create.sql
```

Now lets populate our tables, and insert the first admin-user. This user is needed to login to Web-cyradm

Execute `/usr/local/mysql/bin/mysql mail -u mail -p` And type the following SQL queries:

Postfix-Cyrus-Web-cyradm-HOWTO

```
INSERT INTO adminuser (username, password) VALUES ('admin', 'test');
INSERT INTO domainadmin (domain_name,adminuser) VALUES ('*', 'admin');
INSERT INTO accountuser (username, password) VALUES ('cyrus', 'secret');
```

The first query inserts the admin user into the database, the second one is needed that the cyrus user can be authenticated, use the same password like defined in

`/usr/local/apache/htdocs/web-cyradm/config.inc.php`

Please note, this setup for web-cyradm is fully compatible with replex, another project. Please see <http://www.replex.org> for more details.

5. Configuring PAM

Now we need to get sure that PAM knows how to authenticate the Cyrus users

You have to create the file `/etc/pam.d/imap` with the following entries:

```
auth sufficient pam_mysql.so user=mail passwd=secret host=localhost db=mail table=accountuser use
auth sufficient pam_unix_auth.so
account required pam_mysql.so user=mail passwd=secret host=localhost db=mail table=accountuser us
account sufficient pam_unix_acct.so
```

The lines containing `pam_unix_auth.so` and `pam_unix_acct.so` are only needed if you are migrating from `wu-IMAP` to `cyrus`. This way the users can be authenticate with its old `unix-password` and its new `mysql-based` password

If you will use `Cyrus` also for `POP-Service` just **`cp /etc/pam.d/imap /etc/pam.d/pop`** For user that like to use also `sieve`, must also make a `pam` module for the `sieve` service with the following entry: **`cp /etc/pam.d/imap /etc/pam.d/sieve`** Finally if you want to use `SMTP` authentication you need to copy the same file: **`cp /etc/pam.d/imap /etc/pam.d/smtp`**

```
cp /etc/pam.d/imap /etc/pam.d/pop
cp /etc/pam.d/imap /etc/pam.d/sieve
cp /etc/pam.d/imap /etc/pam.d/smtp
```

6. Configuring Postfix

Postfix needs two major config files: `main.cf` and `master.cf`. Both needs now our attention.

6.1. master.cf

You need to change just one line:

old:

```
flags=R user=cyrus argv=/cyrus/bin/deliver -e -m ${extension} ${user}
```

new:

```
flags= user=cyrus argv=/usr/cyrus/bin/deliver -r ${sender} -m ${extension} ${user}
```

What affect that changes?

A look to the cyrus man–pages **man deliver**clears that issue:

The Postfix default setup uses a wrong path to the cyrus deliver, this is the first change. The parameter »-r« Inserts a proper return path, without that mail rejected by sieve will be sent to cyrus at yourdomain.

6.2. main.cf

Here you need to change some more things like hostname, relaying, alias–lookups etc.

First change hostname:

```
myhostname = foo.bar.org
```

mydestination

Here you have to put all domainnames that are local (corresponding to sendmail's `/etc/mail/sendmail.cf`) If you have multiple domains separate them with comma

```
mydestination = foo.bar.org, example.com, furchbar-grausam.ch,  
whatever.domain.tld, mysql:/etc/postfix/mysql-mydestination.cf
```

relayhost

Here you define where to deliver outgoing mails. If you do not provide any host. mails are delivered directly to the destination smtp host. Usually your relayhosts are your providers smtp–server

```
relayhost = relay01.foobar.net relay02.foobar.net relay03.foobar.net
```

mailtransport

Postfix-Cyrus-Web-cyradm-HOWTO

Here you define how the mails accepted for local delivery should be handled. In our situation mails should be delivered by the cyrus delivery-program

```
mailbox_transport = cyrus
```

At the end of file you need to add:

```
virtual_maps = hash:/etc/postfix/virtual, mysql:/etc/postfix/mysql-virtual.cf
```

Outgoing addresses should be rewritten from i.e test0002 at domain to user.name at virtualhost.com. This is important if you like to use a webmail interface.

```
sender_canonical_maps = mysql:/etc/postfix/mysql-canonical.cf
```

Now you need to create the file `/etc/postfix/mysql-virtual.cf`:

```
#
# mysql config file for alias lookups on postfix
# comments are ok.
#
# the user name and password to log into the mysql server
hosts = localhost
user = mail
password = secret
# the database name on the servers
dbname = mail
# the table name
table = virtual
#
select_field = dest
where_field = alias
additional_conditions = and status = '1'
```

The file `/etc/postfix/mysql-canonical.cf`:

```
# mysql config file for canonical lookups on postfix
# comments are ok.
#
# the user name and password to log into the mysql server
hosts = localhost
user = mail
password = secret
# the database name on the servers
dbname = mail
# the table name
table = virtual
#
select_field = alias
where_field = username
# Return the first match only
```

Postfix-Cyrus-Web-cyradm-HOWTO

```
additional_conditions = and status = '1' limit 1
```

Finally the file `/etc/postfix/mysql-mydestination.cf`:

```
# mysql config file for local domain (like sendmail's sendmail.cf) lookups on postfix
# comments are ok.
#
# the user name and password to log into the mysql server
hosts = localhost
user = mail
password = secret
# the database name on the servers
dbname = mail
# the table name
table = domain
#
select_field = domain_name
where_field = domain_name
```

SMTP Authentication with SASL and PAM

Put the following in your `/etc/postfix/main.cf`

```
smtpd_sasl_auth_enable = yes
smtpd_recipient_restrictions = permit_sasl_authenticated, check_relay_domains
smtpd_sasl_security_options = noanonymous
smtpd_sasl_local_domain =
broken_sasl_auth_clients = yes
```

You also need to create the file `/usr/local/lib/sasl2/smtpd.conf` with the following content:

```
pwcheck_method: saslauthd
```

The next step is make the `saslauthd` socket being found by postfix:

```
mv /var/run/sasl2 /var/run/sasl2-old
ln -s /var/run/saslauthd /var/run/sasl2
```

7. Configuring Cyrus IMAP

7.1. Creating the config files

You have to create `/etc/imapd.conf` and `/etc/cyrus.conf`

7.1.1. `/etc/services`

If you like to use sieve (A Mail Filtering Language), you must change an entry in `/etc/services`. With SuSE 8.0 take especially care about the port for sieve, they defined the wrong port. Add or change the following line:

```
pop3          110/tcp
imap          143/tcp
imaps         993/tcp
pop3s         995/tcp
sieve         2000/tcp
```

7.1.2. `/etc/imapd.conf`

```
postmaster: postmaster
configdirectory: /var/imap
partition-default: /var/spool/imap
admins: cyrus
allowanonymouslogin: no
allowplaintext: yes
sasl_mech_list: PLAIN
servername: servername
autocreatequota: 10000
reject8bit: no
quotawarn: 90
timeout: 30
poptimeout: 10
dracinterval: 0
drachost: localhost
sasl_pwcheck_method: saslauthd
sievedir: /usr/sieve
sendmail: /usr/sbin/sendmail
sieve_maxscriptsize: 32
sieve_maxscripts: 5
#unixhierarchysep: yes
```

Be sure »servername« contains your FQHN (Fully qualified hostname)

The parameter »unixhierarchysep: yes« is only used if you like to have usernames like »hans.mueller.somedomain.tld« see [Section 8](#) for more info

7.1.3. Creating the TLS/SSL Certificate

If you want to enable Cyrus' TLS/SSL facilities you have to create a certificate first. This requires an OpenSSL installation

```
openssl req -new -nodes -out req.pem -keyout key.pem
openssl rsa -in key.pem -out new.key.pem
```


Postfix-Cyrus-Web-cyradm-HOWTO

```
openssl x509 -in req.pem -out ca-cert -req \  
-signkey new.key.pem -days 999  
  
mkdir /var/imap  
  
cp new.key.pem /var/imap/server.pem  
rm new.key.pem  
cat ca-cert >> /var/imap/server.pem  
  
chown cyrus:mail /var/imap/server.pem  
chmod 600 /var/imap/server.pem # Your key should be protected  
  
echo tls_ca_file: /var/imap/server.pem >> /etc/imapd.conf  
echo tls_cert_file: /var/imap/server.pem >> /etc/imapd.conf  
echo tls_key_file: /var/imap/server.pem >> /etc/imapd.conf
```

7.1.4. /etc/cyrus.conf

The other file you need to create is `/etc/cyrus.conf`. It is the configuration file for the Cyrus master process. It defines the startup procedures, services and events to be spawned by process »master«.

```
# standard standalone server implementation  
  
START {  
  # do not delete these entries!  
  mboxlist      cmd="ctl_mboxlist -r"  
  deliver       cmd="ctl_deliver -r"  
  
  # this is only necessary if using idled for IMAP IDLE  
  # idled       cmd="idled"  
}  
  
# UNIX sockets start with a slash and are put into /var/imap/socket  
SERVICES {  
  # add or remove based on preferences  
  imap         cmd="imapd" listen="imap" prefork=0  
  imaps        cmd="imapd -s" listen="imaps" prefork=0  
  pop3         cmd="pop3d" listen="pop3" prefork=0  
  pop3s        cmd="pop3d -s" listen="pop3s" prefork=0  
  sieve        cmd="timsieved" listen="sieve" prefork=0  
  
  # at least one LMTP is required for delivery  
  # lmtp       cmd="lmtpd" listen="lmtp" prefork=0  
  lmtpunix     cmd="lmtpd" listen="/var/imap/socket/lmtp" prefork=0  
}  
  
EVENTS {  
  # this is required  
  checkpoint   cmd="ctl_mboxlist -c" period=30  
  
  # this is only necessary if using duplicate delivery suppression  
  delprune     cmd="ctl_deliver -E 3" period=1440  
}
```

7.2. Creating the directories

There must be created different directories. Additionally you should change some attributes of the filesystem

7.2.1. /var/imap

```
cd /var
mkdir imap
chown cyrus:mail imap
chmod 750 imap
```

7.2.2. /var/spool/imap

```
cd /var/spool
mkdir imap
chown cyrus:mail imap
chmod 750 imap
```

7.2.3. /usr/sieve

```
cd /usr
mkdir sieve
chown cyrus:mail sieve
chmod 750 sieve
```

7.2.4. The rest of the directories

The rest of the directories can be created by the tool **mkimap**

```
su - cyrus
/usr/local/cyrus-imapd-2.1.9/tools/mkimap
```

7.3. Changing the attributes

This is only needed if your filesystem is ext2. I strongly suggest to switch to ext3 filesystems.

To check what type of filesystem is used for `/var` issue the command **mount** or see your `/etc/fstab`. Please note that the `/var` could also be a part of the root filesystem.

```
cd /var/imap
chattr +S user quota user/* quota/*
chattr +S /var/spool/imap /var/spool/imap/*
```

8. Configuring Web-cyradm

First copy the distributions config file

```
cp config.inc.php-dist config.inc.php

touch /var/log/web-cyradm-login.log
chown nobody /var/log/web-cyradm-login.log
```

8.1. Cyrus setup

```
# The Cyrus login stuff

$CYRUS_HOST="localhost";
$CYRUS_PORT="143";
$CYRUS_USERNAME="cyrus";
$CYRUS_PASSWORD="secret";
```

This should be self-explanatory. Please note there is no support for SSL connections at the moment, this is especially important for users that what to like to have web-cyradm not on the same server where the cyrus-imapd resides.

8.2. Database setup

Please note: the database related code is now being rewritten to use PEAR as a database abstraction. So in future you will be able to also use PostgreSQL as database engine (with the patch for postfix). In meantime it is needed to setup the database setup twice (only for the CVS versions, release 2002-05-25_xx will just ignore the unused stuff).

```
The MySQL stuff to be replaced after all files have PEAR implemented

$MYSQL_HOST="localhost";
```

Put here the name of your mysql-server. Please note that if you use a mysql database on the same host as web-cyradm does, use »localhost« as the hostname if you followed the instructions at [Section 4](#).

```
$MYSQL_DB="mail";
$MYSQL_USER="mail";
$MYSQL_PASSWD="secret";
```

This should be self-explanatory

```
/* DB_TYPE

Possible Values are:
o mysql
o pgsq

To operate a mailsystem with PostgreSQL you will need a patch for
Postfix.

Other Databases needs to be supported by PAM and postfix

*/
```

```
$DB_TYPE="mysql";  
$DB_HOST="localhost";  
$DB_NAME="mail";  
$DB_USER="mail";  
$DB_PASSWD="secret";
```

This is the PEAR stuff with is only needed (at the moment) if you work with the CVS versions

```
$DSN="$DB_TYPE://$DB_USER:$DB_PASSWD@$DB_HOST/$DB_NAME";
```

And this variable is the final result of the PEAR configuration which is used by web-cyradm, please leave in untouched

8.3. Default Quota

The default quota to be used is set in the Variable »DEFAULT_QUOTA=20000« and is used when creating a new domain

8.4. Crypted passwords

At the moment the handling of crypted passwords will be supported beginning at release 0.5.2. Check the variable \$CRYPT in `config.inc.php` value 0 means no encryption, 1 means Shadow compatible encryption, 2 means MySQL encryption.

8.5. Usernames

There are two schemas of usernames supported with are defined in the variable »DOMAIN_AS_PREFIX«. The default is to have a defined prefix (\$DOMAIN_AS_PREFIX=0), i.e. »test« for the domain »example.com«. With this scheme, the first user gets the username test0001, the second test0002 and incrementing.

The other one is to have usernames like »hans.mueller.example.com«. If that case set \$DOMAIN_AS_PREFIX=1

At the moment you can not mix both schemas, evaluate carefully with scheme matches your needs best

If you choose to have \$DOMAIN_AS_PREFIX=1, be sure you uncomment the option »unixhierarchysep: yes« like described in [Section 7.1.2](#)

9. Testing the setup

9.1. (Re-)Starting the daemons

Now all the software has been installed and configured, lets do some testings now. First you have to (re-)start all the daemons affected

- postfix start
- /etc/init.d/cyrus start
- /etc/init.d/mysql.server start
- /usr/local/apache/bin/apachectl startssl

Hopefully all daemons started without any complaints...

Now you can verify if the daemons are running properly by issuing **netstat -an|grep LISTEN**

The output should look similar like that:

```
bond:~ # netstat -an|grep LISTEN
tcp        0      0 0.0.0.0:993          0.0.0.0:*           LISTEN
tcp        0      0 0.0.0.0:995          0.0.0.0:*           LISTEN
tcp        0      0 127.0.0.1:3306       0.0.0.0:*           LISTEN
tcp        0      0 0.0.0.0:110         0.0.0.0:*           LISTEN
tcp        0      0 0.0.0.0:143         0.0.0.0:*           LISTEN
tcp        0      0 0.0.0.0:2000        0.0.0.0:*           LISTEN
tcp        0      0 0.0.0.0:80          0.0.0.0:*           LISTEN
tcp        0      0 0.0.0.0:25          0.0.0.0:*           LISTEN
tcp        0      0 0.0.0.0:443         0.0.0.0:*           LISTEN
```

The port are assigned like this:

- 993 imap-ssl
- 995 pop3-ssl
- 3306 mysql
- 110 pop3
- 143 imap
- 2000 sieve
- 80 http
- 25 smtp
- 443 https

9.2. Testing Web-cyradm

Now you should be able to connect to <http://localhost/web-cyradm/> Login with the credentials defined before.

Define a Domainname and some accounts. Be sure the domainname belongs to your server. If not you have to fake it by enter the domain in /etc/hosts. The Domain must also be defined as local in /etc/postfix/main.cf (mydestination = domain)

Please be sure that you are providing a unique domain prefix when adding a new domain. I.e. test for the domain test.org. If you don't provide such a prefix you will get a error-message

9.3. Testing postfix

Now we are going to write a mail:

```
telnet localhost 25
Trying ::1...
Trying 127.0.0.1...
Connected to localhost.
Escape character is '^]'.
220 mail ESMTP Postfix

helo localhost
250 mail
mail from: luc at delouw.ch
250 Ok
rcpt to: rcpt to: luc at localhost
250 Ok

data
354 End data with <CR><LF>.<CR><LF>
some text
.
250 Ok: queued as B58E141D33

quit
```

If you see such a message, then all seems to work fine. Be sure to specify a recipients address you previously defined in the web-cyradm database

If you get an error like this:

```
rcpt to: luc at localhost
451 <luc at localhost>: Temporary lookup failure
```

Then either MySQL is not running, DB permission are not set properly or you miss-configured /etc/postfix/main.cf

On any errors, I suggest to examine /var/log/mail. Often you will find some hints whats went wrong.

9.4. Testing the IMAP and POP functionality

A lot of users like to test the cyrus-IMAPd with the Command Line Interface (CLI) »cyradm« and they are failing. To be successful with cyradm, you will need to add the cyrus user to /etc/sasl2 because »cyradm« always authenticates against SASL __and__ IMAP.

To add the cyrus user to the sasl2 use the command:

```
saslpasswd2 -c cyrus
Password: (enter your passwd)
Again (for verification): (enter your password)
```

Postfix-Cyrus-Web-cyradm-HOWTO

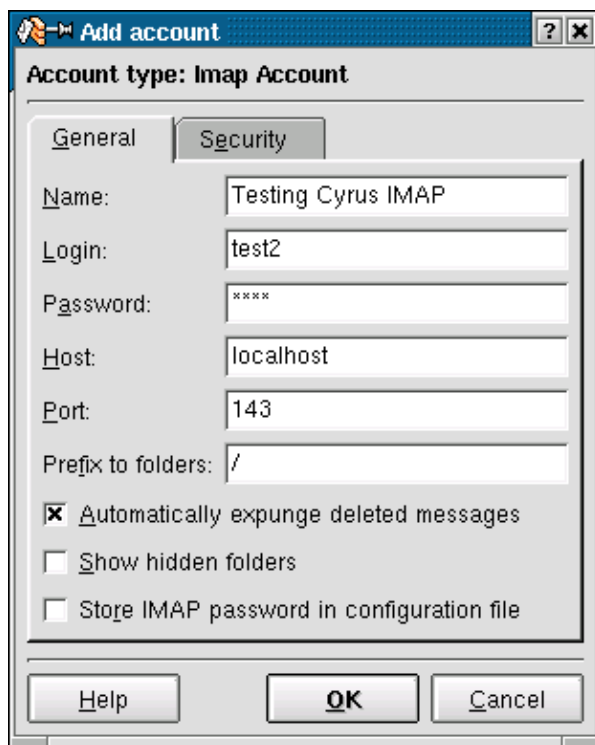
To use the »cyradm« CLI please take care that the tool does not recognize standard CLI-options like -u and similar. Please follow the syntax like described in the man page »cyradm 1« like the following example:

```
bond:~ # cyradm --user cyrus --server localhost --auth plain
Password: # This is the SASL2 password
IMAP Password: # This is the IMAP password that you need to enter in the mysql-table »accountuser
localhost>
```

With the cyrus command **help** you will see all possible commands and its abbreviations

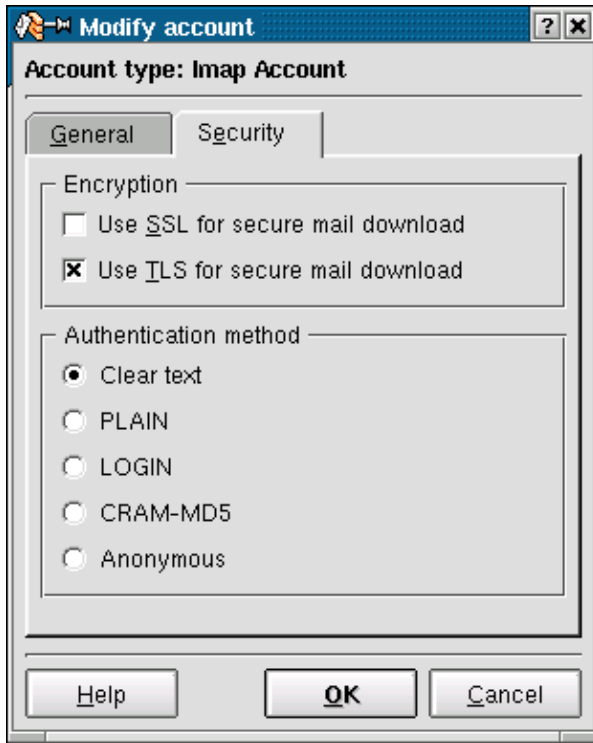
To make that kind of tests, you just need a mailclient like kmail or netscape (Yes of course M\$-Products are working as well) but in this example I'll using kmail

Figure 3. Creating a new account



If you enabled TLS/SSL, you may wish to test also the following:

Figure 4. Testing TLS/SSL functionality



If login fails, and you are sure, you typed the right password, take care that MySQL is running

10. Further Information

Here you will find some other resources available in the internet

10.1. News groups

Some of the most interesting news groups are:

- alt.comp.mail.postfix

This is low traffic-group

- comp.mail.imap

Maybe you also check out your country newsgroups e.g ch.comp.os.linux

Most newsgroups have their own FAQ that are designed to answer most of your questions, as the name Frequently Asked Questions indicate. Fresh versions should be posted regularly to the relevant newsgroups. If you cannot find it in your news spool you could go directly to the [FAQ main archive FTP site](#). The WWW versions can be browsed at the [FAQ main archive WWW site](#).

10.2. Mailing Lists

10.2.1. <[postfix-users at postfix.org](mailto:postfix-users@postfix.org)>

Send an mail to <[majordomo at postfix.org](mailto:majordomo@postfix.org)> with the content (not subject):

```
subscribe postfix-users
```

Before writing to the list, check out the archive: <http://www.deja.com/group/ mailing.postfix.users>

10.2.2. <[info-cyrus at lists.andrew.cmu.edu](mailto:info-cyrus@lists.andrew.cmu.edu)>

Send an mail to <[majordomo at lists.andrew.cmu.edu](mailto:majordomo@lists.andrew.cmu.edu)> with the content (not subject):

```
subscribe info-cyrus
```

Before writing to the list, check out the archive:

<http://asg.web.cmu.edu/archive/index.php?mailbox=archive.info-cyrus>

10.2.3. <[web-cyradm at test.delouw.ch](mailto:web-cyradm@test.delouw.ch)>

Send an mail to <[majordomo at test.delouw.ch](mailto:majordomo@test.delouw.ch)> with the content (not subject):

```
subscribe web-cyradm
```

Before writing to the list, check out the archive: <http://www.delouw.ch/linux/web-cyradm/list>

10.3. HOWTO

These are intended as the primary starting points to get the background information as well as show you how to solve a specific problem. Some relevant HOWTOs are [Cyrus-IMAP](#) and [Apache-Compile-HOWTO](#). The main site for these is the [LDP archive](#)

10.4. Local Resources

Usually distributions install some documentation to your system. As a standard they are located in `/usr/share/doc/packages`

The SuSE rpms of Cyrus contains a lot a such documentation.

Postfix has some html-files in the source directory `/usr/local/postfix-1.1.11/html`

PAM comes also with lots of documentation in `/usr/share/doc/packages/pam`

The `pam_mysql` module has a readme with the size of 1670 bytes :-(

10.5. Web Sites

There are a huge number of informative web sites available. By their very nature they change quickly so do not be surprised if these links become quickly outdated.

A good starting point is of course the [Linux Documentation Project](#) home page, an information central for documentation, project pages and much more.

To get more deepened information about Postfix, then www.postfix.org would be the starting point.

Please let me know if you have any other leads that can be of interest.

11. Questions and Answers

Here I answer the questions which I got from users. If you don't find an answer feel free to contact me

1. [FAQ](#)

[11.1.1. *Does web-cyradm only support users like »test0001« ? I'd like to have a more descriptive username*](#)

[11.1.2. *web-cyradm complains about »Fatal error: Call to undefined function: bindtextdomain\(\) in /www/web-cyradm-0.5.1/index.php on line 46«, whats wrong?*](#)

[11.1.3. *I got a error from web-cyradm like this »Fatal error: Call to undefined function: query\(\) in /usr/local/httpd/htdocs/web-cyradm/auth.inc.php on line 17«*](#)

[11.1.4. *Why MySQL and not LDAP?*](#)

[11.1.5. *Why Postfix and not Qmail?*](#)

[11.1.6. *I got a Error: "Temporary lookup failure"*](#)

[11.1.7. *Does this HOWTO also work on other platforms?*](#)

1. FAQ

11.1.1. Does web-cyradm only support users like »test0001« ? I'd like to have a more descriptive username

web-cyradm does also support usernames like »user.name.example.com« if you configure it. You need to change config.inc.php and change the value of DOMAIN_AS_PREFIX to 1. then you need to add »unixhierarchysep: yes« to your /etc/imapd.conf

11.1.2. web-cyradm complains about »Fatal error: Call to undefined function: bindtextdomain() in /www/web-cyradm-0.5.1/index.php on line 46«, whats wrong?

Web-cyradm needs gettext enabled PHP. Please compile PHP with the configure-option --with-gettext.

gettext is needed for NLS (Native Language Support) which means contributors can easily translate web-cyradm to there language. Fill in your Language in the file /usr/local/apache/htdocs/web-cyradm/locale/templates/web-cyradm.pot and send me the file, then your language will be supported in the next CVS snapshot

11.1.3. I got a error from web-cyradm like this »Fatal error: Call to undefined function: query() in /usr/local/httpd/htdocs/web-cyradm/auth.inc.php on line 17«

Web-cyradm depends on PEAR for database abstraction. PEAR is included in recent PHP versions. Often PEAR is a separate package, check out the package base of your distribution. I strongly suggest to update to the most recent version of PHP anyway, because a lot of bugs have been fixed.

11.1.4. Why MySQL and not LDAP?

Good question. LDAP is role-based and it would be indeed a better solution for such applications. Unfortunately LDAP is very hard to set up. You have to make proper schemes etc. MySQL is the way strait ahead, it is very easy to handle and versatile. There is a PAM module available for LDAP, feel free to use it.

11.1.5. Why Postfix and not Qmail?

Postfix-Cyrus-Web-cyradm-HOWTO

Lots of people like to see such a setup with Qmail. The reason why is, Mysql-support is a hack and not in the included in the main source-tree. This could end up in a bad situation. Think if a security-hole is found in qmail and the patch does not work with the corrected version. Postfix is supporting MySQL natively. Another (personal) reason is that I find Postfix more sympatic (I don't know why)

11.1.6. I got a Error: "Temporary lookup failure"

Postfix cannot look up the alias table. Must common failure is that MySQL is not running, or there is a authentication Error. Check `/var/log/mail` and `/usr/local/mysql/var/<hostname>.err` to track the error.

11.1.7. Does this HOWTO also work on other platforms?

Unsure. I personally compiled MySQL and Apache on AIX 4.3 and 5.1L (php does not run properly on AIX), Solaris 6/7/8 and HP-UX. Cyrus, pam_mysql and cyrus I never tried. On Solaris there is maybe a chance to get pam_mysql running. On AIX there is no PAM, but a similar mechanism. In short: Try it, and let me know if were successful